

HOW TO SETUP WI-FI, ON LINKSYS ROUTER

Provided By: PC-Breeze.net

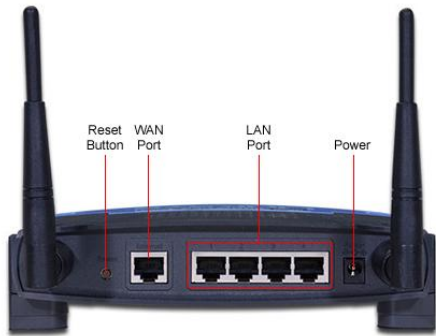
MATERIAL

- Linksys Router
Firmware: v4.21.1
- Wi-Fi Enabled
Computer
- Modem - Internet
Connection
- Network Cables



- Done on a Linksys Router Firmware: v4.21.1
Other firmware will be similar.
- Wi-Fi enabled computer is running Windows XP
with the Windows Zero Configuration Service.

- **Caution:** Do not press the RESET button on the back of the router this will erase the configuration, If necessary to correct a mistake reset your router with this button.



Step 1 - Plan Your Network.

- Decide a administrator password.
- Decide a wireless network name(SSID) and network password 8 characters long.
- Find a location for router and modem.

USERNAME: root
PASSWORD: password

SSID: Wireless
PASSWORD: 12345678

Step 2 - Setup Your Hardware.

- Plug in the phone line or cable line into modem.
- Run a network cable to WAN port on router and plug into Modem LAN port.
- Plug up router and modem power cable
- Now power on router, modem and Wi-Fi enabled computer.

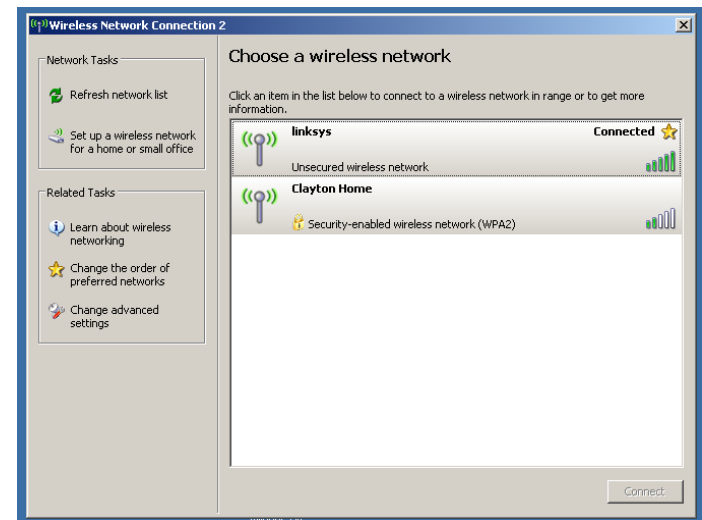


Step 3 - Connect to Your Default Setup.

- On Wi-Fi enabled computer connect to wireless router by searching for wireless networks.

Note : By default the wireless routers network name (SSID) is Linksys

- Once connected open web browser, we used FireFox.
- Click the Address bar, type 192.168.1.1 and press enter.
- Type in username: **root**
password: **admin**



Step 4 - Change Your Admin Password.

- From web browser click Administrator.
- Click router password field and type new admin password ,re-enter to confirm, we used “password”
- Click save settings and click continue.
- Log back in with username: root and the new password.

The screenshot displays the Cisco WRT54G router's administration web interface. The page title is "Wireless-G Broadband Router WRT54G". The navigation menu includes "Administration" (selected), "Setup", "Wireless", "Security", "Access Restrictions", "Applications & Gaming", and "Status". The "Administration" menu is further divided into "Management", "Log", "Diagnostics", "Factory Defaults", "Firmware Upgrade", and "Config Management".

The main content area is titled "Router Password" and contains the following sections:

- Local Router Access:** "Router Password:" and "Re-enter to confirm:" fields, both containing masked characters (dots).
- Web Access:** "Access Server:" with radio buttons for HTTP and HTTPS; "Wireless Access Web:" with radio buttons for Enable and Disable.
- Remote Router Access:** "Remote Management:" with radio buttons for Enable and Disable; "Management Port:" with a text input field containing "8080"; "Use https:" with a checkbox that is unchecked.
- UPnP:** "UPnP:" with radio buttons for Enable and Disable.

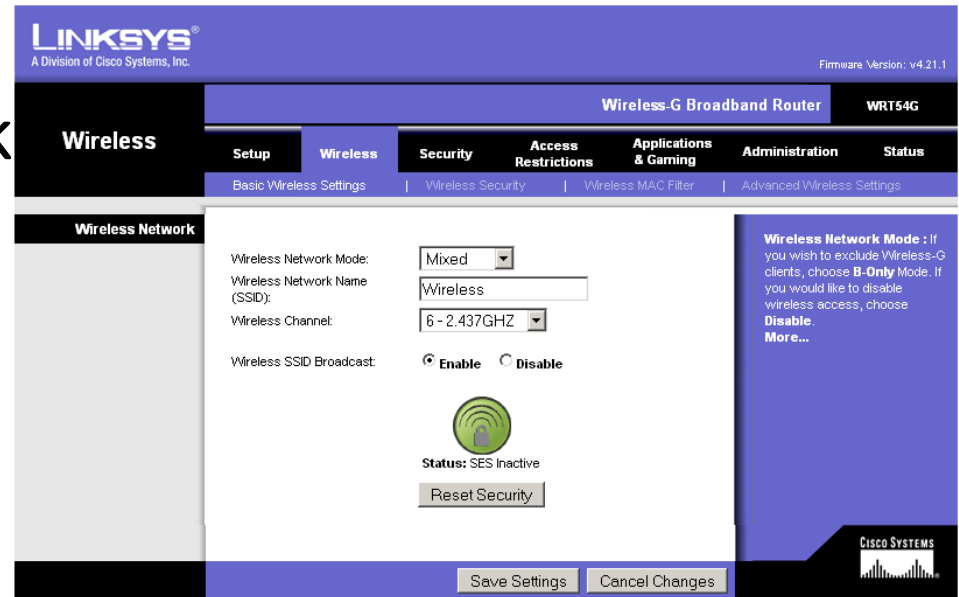
At the bottom of the page, there are "Save Settings" and "Cancel Changes" buttons. On the right side, there is a help sidebar with the following text:

- Local Router Access :** You can change the Router's password from here. Enter a new Router password and then type it again in the Re-enter to confirm field to confirm.
- Web Access :** Allows you to configure access options to the router's web utility. [More...](#)
- Remote Router Access :** Allows you to access your router remotely. Choose the port you would like to use. You must change the password to the router if it is still using its default password.
- UPnP :** Used by certain programs to automatically open ports for communication. [More...](#)

The Cisco logo and "CISCO SYSTEMS" text are visible in the bottom right corner.

Step 5 - Change Your Wireless Network Name(SSID).

- From web browser click Wireless.
- Click Wireless Network Name(SSID) field and erase Linksys.
- Type New Wireless Network Name(SSID), we used “Wireless”
- Click save settings and click continue.

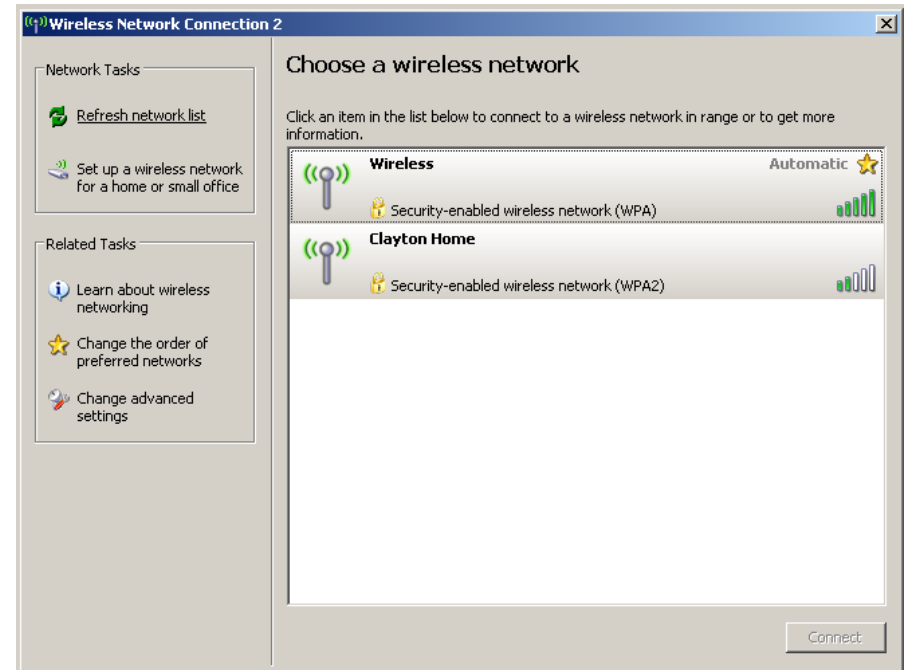


Step 6 - Re-Connect to Your Router.

- Connect to your wireless router by searching for wireless networks.

Note : Our Wireless Routers Network Name (SSID) is “Wireless”

- Once connected web browser. In the Address bar type 192.168.1.1 and press enter.
- Type in the username: root password: password



Step 7 - Secure Your Wireless Network.

- Web browser click on Wireless, then click on Wireless Security.
- Click in the Security Mode field and Click WPA Personal.
- Type a new 8 character wireless password, we used “12345678”
- Click save settings and click continue.

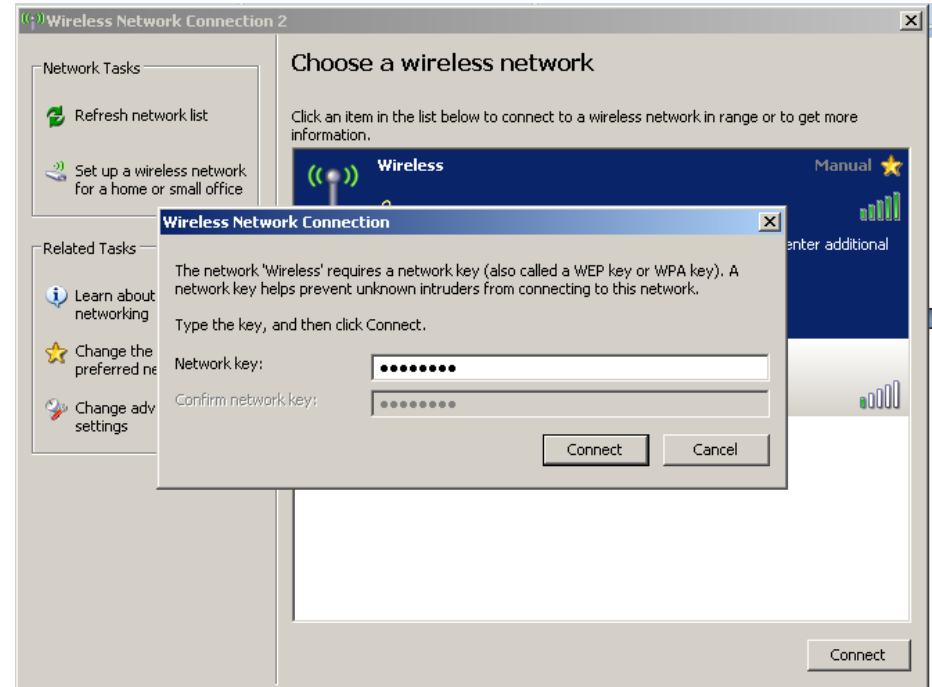
The screenshot shows the Linksys WRT54G web interface. The top navigation bar includes 'Wireless', 'Setup', 'Wireless', 'Security', 'Access Restrictions', 'Applications & Gaming', 'Administration', and 'Status'. The 'Wireless Security' page is active, showing the following configuration:

- Security Mode: WPA Personal
- WPA Algorithms: TKIP
- WPA Shared Key: 12345678
- Group Key Renewal: 3600 seconds

Buttons for 'Save Settings' and 'Cancel Changes' are visible at the bottom. A 'Security Mode' help box on the right explains that all devices must use the same security mode to communicate.

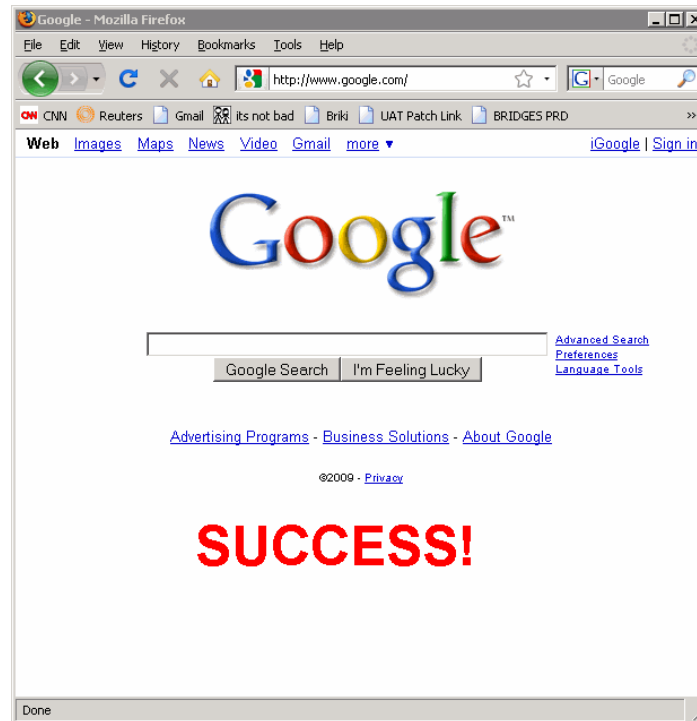
Step 8 - Re-Connect to Your Secure Router.

- Connect to the wireless router by searching for wireless networks.
- When connecting you will be prompted for a network key, we used "12345678"
- Enter in the Key twice and hit connect,



Step 9 - Test Your Internet Connection.

- Open your web browser. In the Address bar type Google.com and press enter to test your connection.



Oops!

- If the web browser didn't display the Google website check to make sure that you are connected to the wireless network.
- If lost and cannot figure out what is wrong, hit your reset button on your router.

Note: The Reset button will start you from scratch, see step 2.

Interested in More?

Visit <http://PC-Breeze.net>
click on our how to link

PC-Breeze.Net

Computer and Network Solutions
Tech Support

Jason Pendergrass

PC-Breeze.Net
Henderson, NC 27536
252-425-5846
[Http://www.PC-Breeze.net](http://www.PC-Breeze.net)



Virus Scanning, Custom Machines, and Remote Support